



**BALTIMORE  
AIRCOIL COMPANY**

R ACC S1500E v00 EN



## **Options & accessories**

*Open cooling towers*

*S1500E*

**INSTALLATION INSTRUCTIONS**



# Table of contents

## Page

**3**      **Bottom water outlet / Equalizer / Remote Sump**

---

**3**      **Internal sliding service platform**

---

5      Access to fill

**6**      **Internal service platform**

---

**6**      **Internal ladder only**

---

**7**      **External ladder and railing on top of hot water basin**

---

7      Ladder

8      Handrail

**8**      **Discharge attenuation**

---

8      Single discharge attenuation

9      Double discharge attenuation

**9**      **Intake attenuation**

---

9      Single stack unit

10      Double stack unit

**11**      **Motor davit**

---

**12**      **Shipped loose fan cowl**

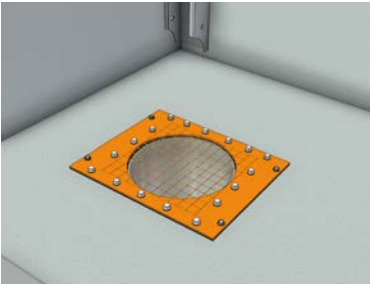
---

**15**      **Further assistance and information**

---

## Bottom water outlet / Equalizer / Remote sump

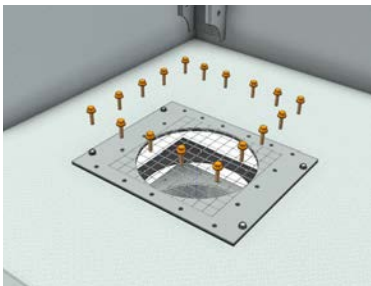
The bottom connection installation, is typical for all bottom outlets, equalizer and remote sump connections. Bottom connection parts are shipped loose.



Back-up plate is factory installed



Align rubber gasket and bottom connection.



Install M8 hardware

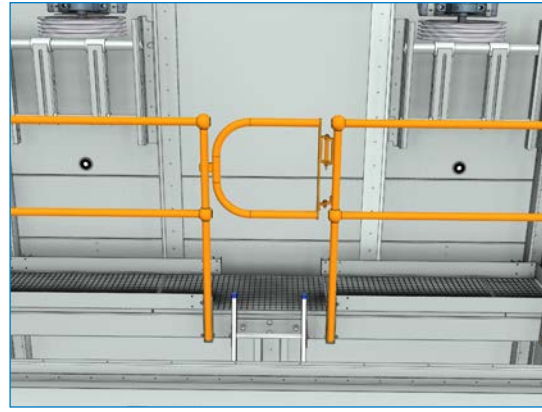
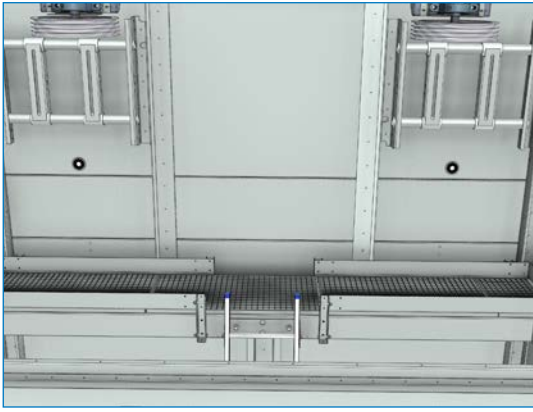


## Internal sliding service platform

The sliding platform base and platform ladder is factory installed. The handrail system requires field installation. The handrail vertical posts drop into pre-installed brackets in a specific configuration depending on the size of the unit.



Pre-installed platform base and ladder



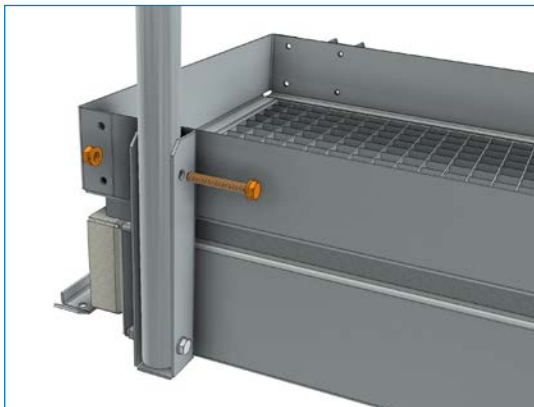
Drop handrail vertical posts into the pre-installed brackets



Handrail configuration depending on unit size



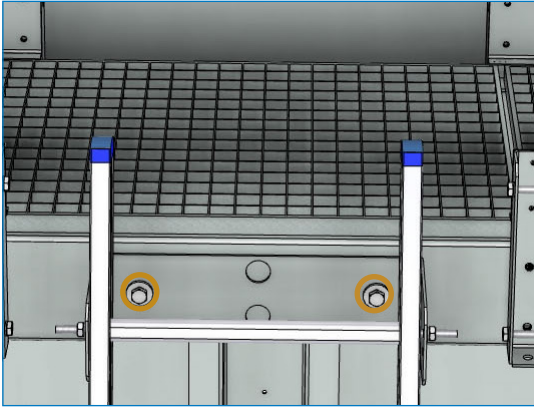
Slide in the horizontal tubes into the vertical posts, secure with hardware installed in vertical post



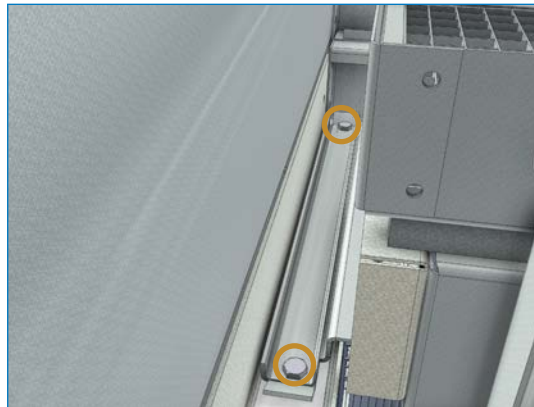
Secure the vertical posts in each bracket using M12 bolts provided. Gate is pre-welded to one of the vertical posts.

## Access to fill pack

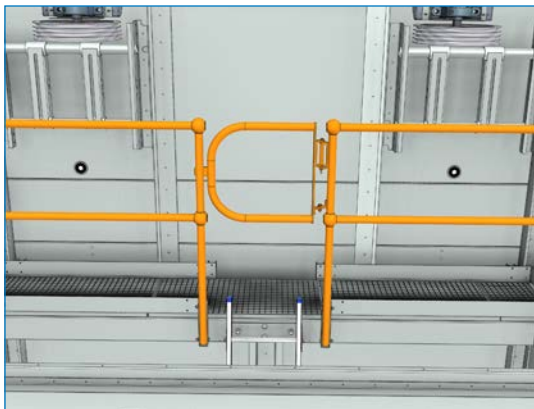
The Internal Sliding Platform can be used to access the fill pack, follow the next steps to move the sliding platform to the fill side.



Remove the access ladder by removing the two M12 bolts.



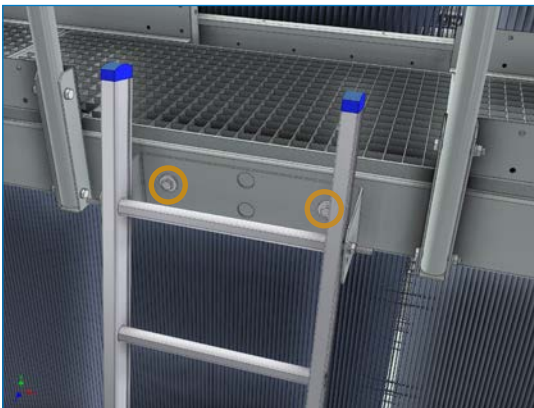
Remove the M10 securing hardware on each side of the platform.



Remove the handrail and vertical posts.



Slide the platform to the fill side and secure again with M10 hardware.



Assemble access ladder with two M12 bolts.



Install the vertical posts and handrail.

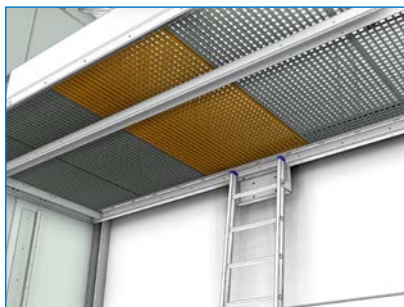


Now the platform can be used to access the fill pack.



## Internal service platform (full area) (only for S15E xxxx-11xE and S15E xxxx-12xE units)

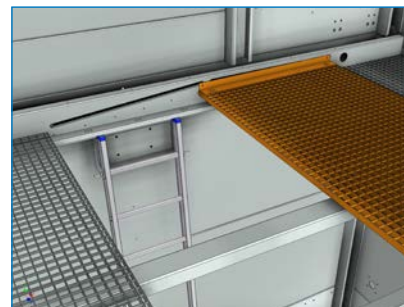
The Internal Service Platform (full area) and access ladder is factory installed, no field installation is required. The platform can be accessed by opening the sliding grid.



Push upwards on one side of the grid to open



Slide the grid sideways.



Make sure the grid is secured by sliding it to the end position (lock in place).

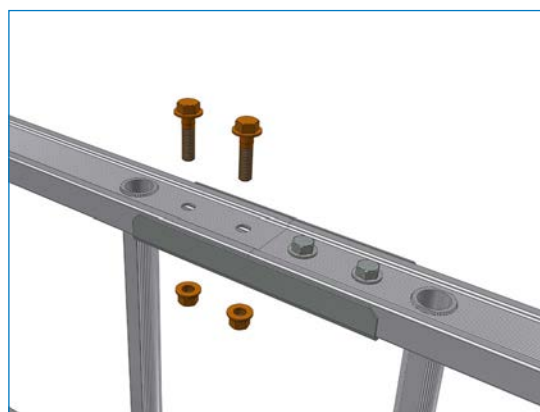


**Caution**

**Always close the sliding grid when standing on the platform.**

## Internal ladder only

Depending on model the internal ladder is supplied in two parts. Only in this case, slide the two half ladders into the pre-installed U-channels.



Install bolts M10



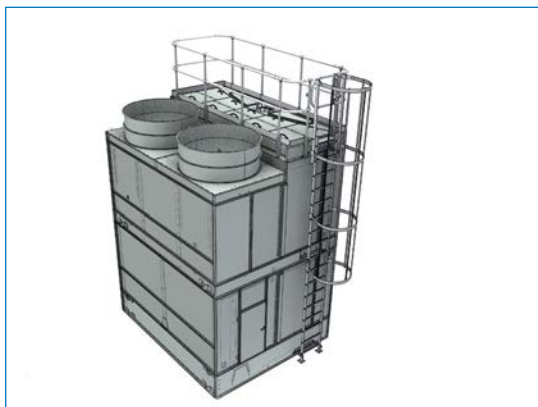
Lift the ladder into place and drop the pre-welded bolts into the mounting holes in the upper support channel. No further fastening is required.



Note: The ladder can also be oriented towards the fill pack (similar procedure).

# External ladder and railing on top of hot water basin

The external service ladder, cage and the handrail are shipped loose.

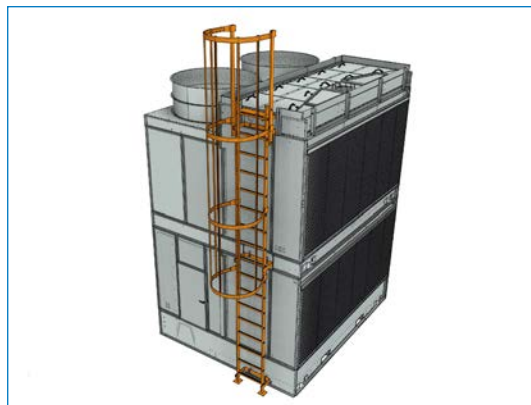


Unit with installed ladder and railing

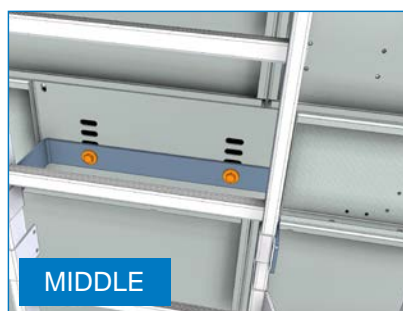
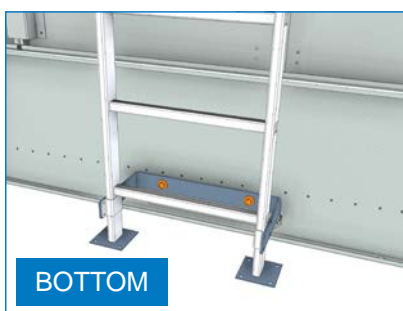
## Ladder



External ladder brackets are factory installed.

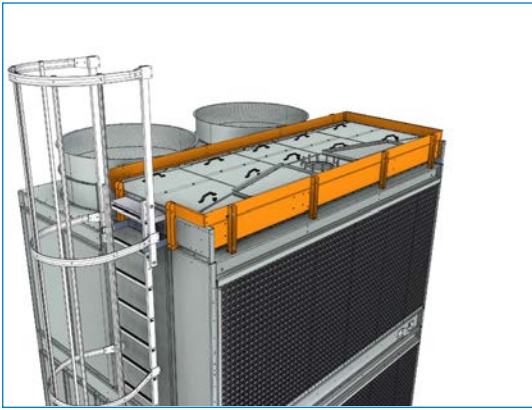


Lift the ladder and cage into place.



Fasten ladder brackets with M12 hardware.

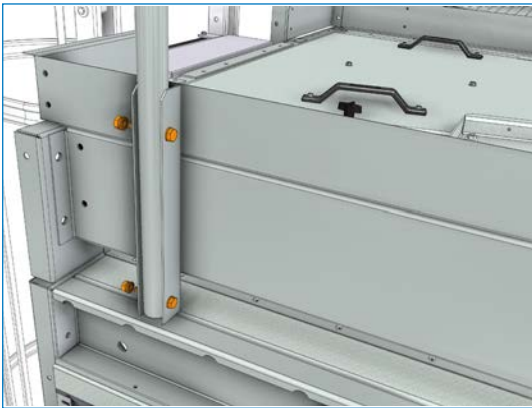
## Handrail



All channels and brackets are factory installed.



Install all vertical posts.



Tighten with M10 hardware



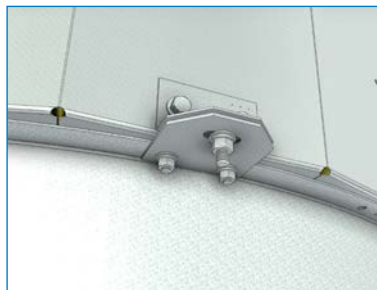
Slide in handrails and tighten with set screws.

## Discharge attenuation

### Single discharge attenuation



Lift single discharge attenuator onto the pre-installed fan cowls.



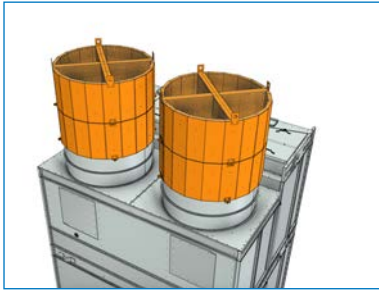
Align the 4 L-brackets with pre-installed plates.



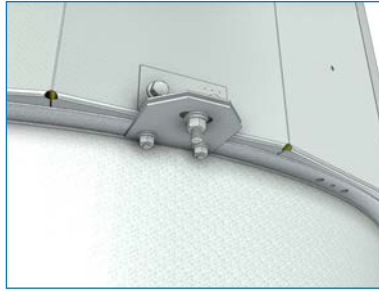
Fasten with M10 hardware.



## Double discharge attenuation



Lift double discharge attenuator onto the pre-installed fan cowls.



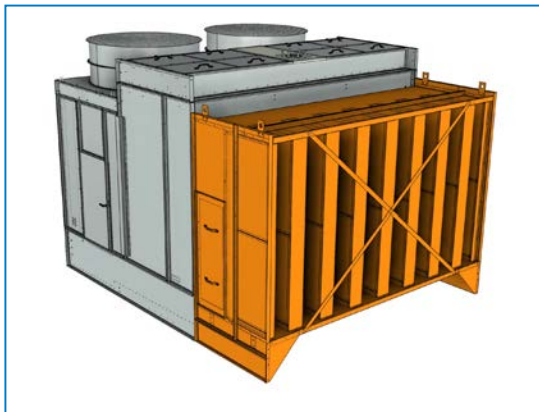
Align the 4 L-brackets with pre-installed plates.



Fasten with M10 hardware.

## Intake attenuation

### Single stack unit



Lift the intake attenuator onto the steel or concrete support structure.

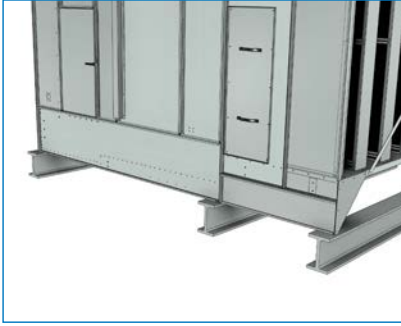


Make sure the intake attenuator attachment holes line up with the unit holes. Secure with tappers.

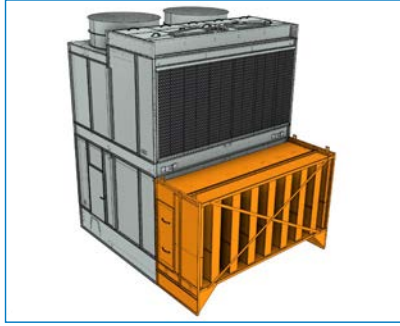


The shipping strap diagonals can be removed after installation

## Double stack unit



Lift the lower intake attenuator onto the steel or concrete support structure. Make sure the intake attenuator attachment holes line up with the unit holes.



Secure with tappers.



Lift the upper intake attenuator onto the lower intake attenuator. Make sure the intake attenuator attachment holes line up with the unit holes.



Secure with tappers.

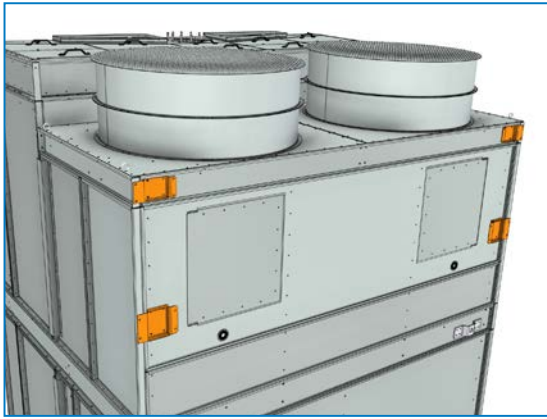


The shipping strap diagonals can be removed after installation



Note: for model S15E xx18-xxE, the intake attenuator consists of two sections for a single stack unit and four sections for a double stack unit. These sections need to be fastened in the middle pre-installed channels at air intake.

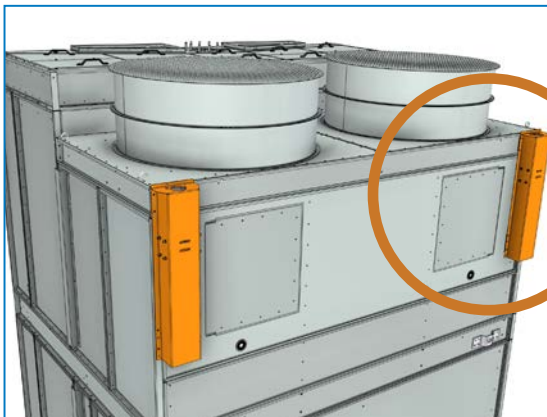
# Motor davit



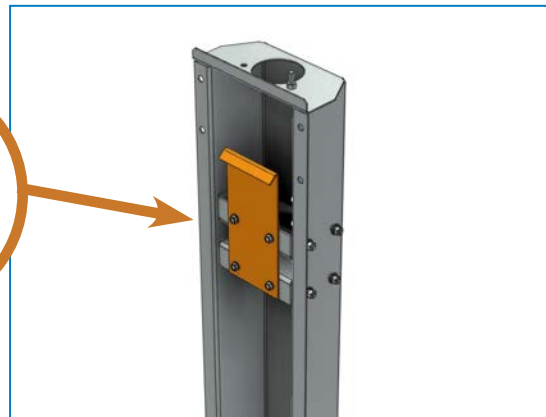
Motor davit support brackets are pre-installed in the factory. The davit socket is shipped loose.



Install one bolt & nut facing up on door side of the socket.



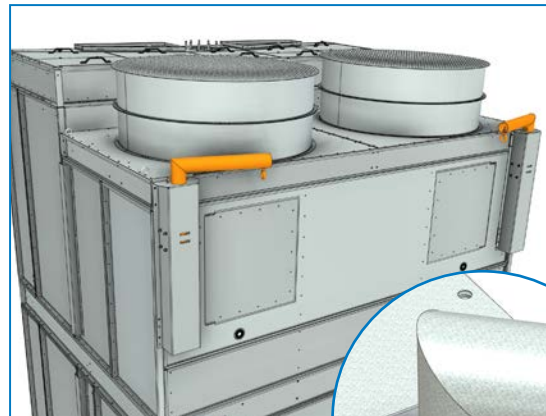
Attach the davit socket at each motor location. Hook onto bottom flange of fan deck and secure socket to pre-installed brackets on unit.



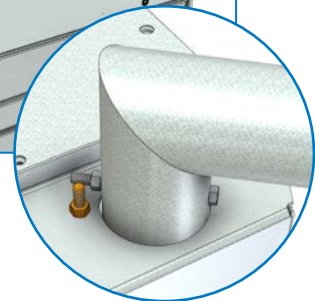
The hook plate is provided to support weight of socket during installation only.



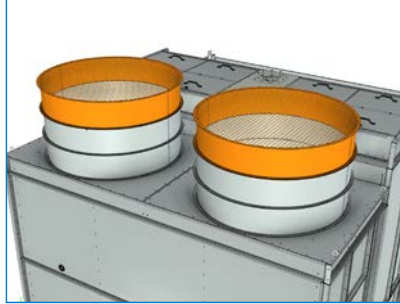
Fasten davit socket with M10 hardware to preinstalled brackets.



Slide in davit arm.



## Shipped loose fan cowl (only on single stack units with WQ fan)



Lift a single fan cowl with fan guard onto the two factory installed fan cowls. Each fan should have stack up 3 cowls on top of each other.

Align the hole pattern and tighten with tappers







### BALTICARE

BAC has established a specialized independent total care company called Balticare . The BAC Balticare offering involves all elements required to ensure a safe and efficient operation of your evaporative cooling products. From a full range of risk assessment to selective water treatment, training, testing, record keeping and annual system overview. For more details, contact BAC Balticare at [www.balticare.com](http://www.balticare.com) or you can also contact your local BAC representative for further information and specific assistance at [www.BaltimoreAircoil.eu](http://www.BaltimoreAircoil.eu).

### MORE INFORMATION

#### REFERENCE LITERATURE

- Eurovent 9-5 (6) Recommended Code of Practice to keep your Cooling System efficient and safe. Eurovent/Cecomaf, 2002, 30p.
- Guide des Bonnes Pratiques, Legionella et Tours Aéroréfrigérantes. Ministère de l'Emploi et de la Solidarité, Ministère de l'Economie des Finances et de l'Industrie, Ministère de l'Environnement, Juin 2001, 54p.
- Voorkom Legionellose. Ministerie van de Vlaamse Gemeenschap. December 2002, 77p.
- Legionnaires' Disease. The Control of Legionella Bacteria in Water Systems. Health & Safety Commission. 2000, 62p.
- Hygienische Anforderungen an raumluftechnische Anlagen. VDI 6022.

#### INTERESTING WEB SITES

[www.BaltimoreAircoil.eu](http://www.BaltimoreAircoil.eu);  
[www.Balticare.com](http://www.Balticare.com);  
[www.eurovent-certification.com](http://www.eurovent-certification.com);  
[www.ewgli.org](http://www.ewgli.org);  
[www.ashrae.org](http://www.ashrae.org);  
[www.uniclima.org](http://www.uniclima.org);  
[www.aicvf.org](http://www.aicvf.org);  
[www.hse.gov.uk](http://www.hse.gov.uk)

COOLING TOWERS

---

CLOSED CIRCUIT COOLING TOWERS

---

ICE THERMAL STORAGE

---

EVAPORATIVE CONDENSERS

---

HYBRID PRODUCTS

---

PARTS & SERVICES



[www.BaltimoreAircoil.eu](http://www.BaltimoreAircoil.eu)

[info@BaltimoreAircoil.eu](mailto:info@BaltimoreAircoil.eu)

[www.balticare.com](http://www.balticare.com)

[info@balticare.com](mailto:info@balticare.com)

Please refer to our website for local contact details.