

# Baltimore Aircoil

Reliably serving your cooling process ...



**Helios**<sup>series</sup>  
Open Cooling Towers PTE



**BALTIMORE  
AIRCOIL COMPANY**

... because temperature matters™

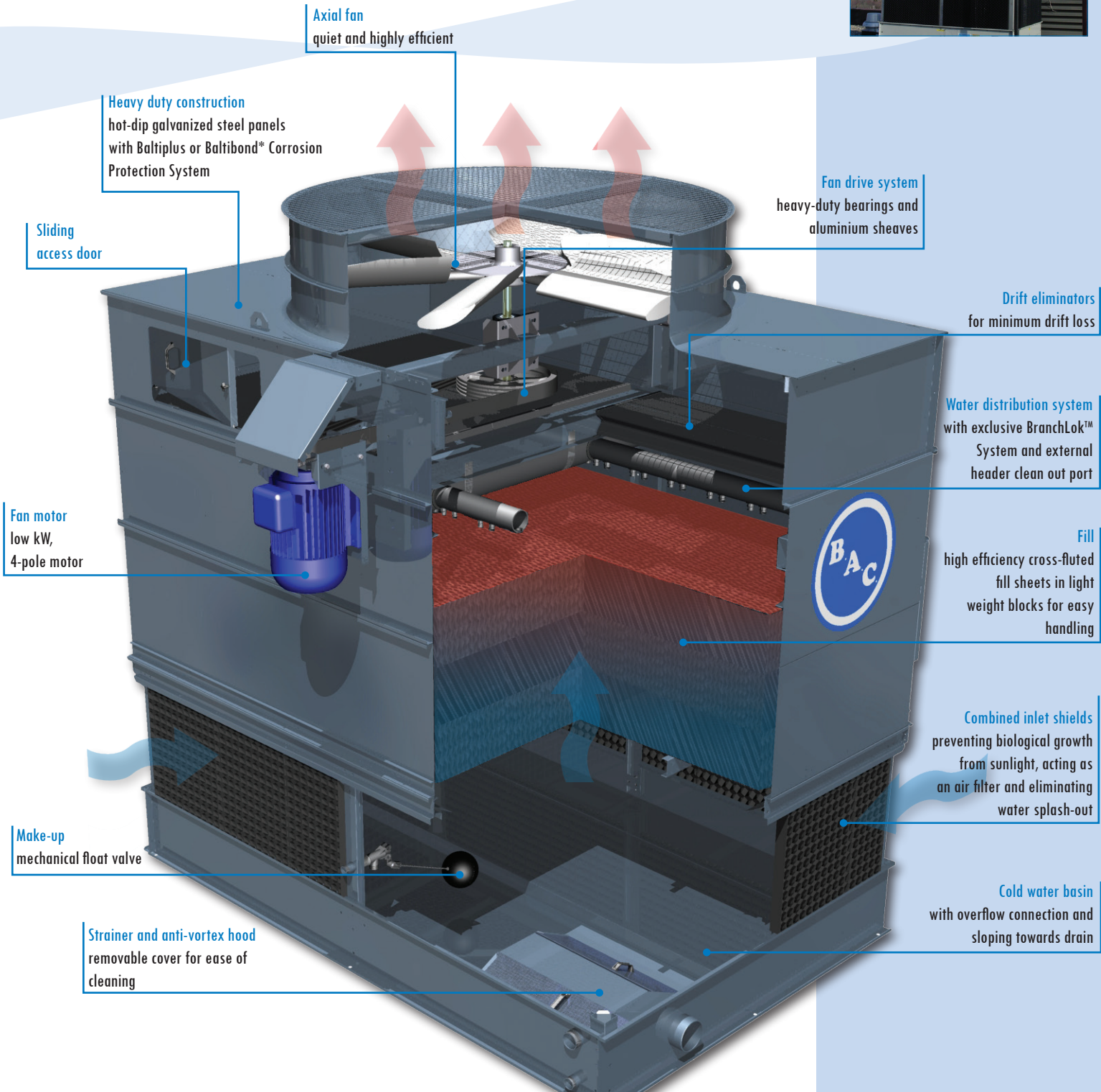
## Open Cooling Towers PTE

**Baltimore Aircoil Company** is a worldwide leading manufacturer of heat rejection equipment for a wide range of applications. In its constant search for improvement in design and performance BAC has developed and perfected many features which have become the standard of excellence for cooling throughout the world.

**Helios Series counterflow open cooling towers** use energy efficient axial fans with low sound emission and incorporate superior features in terms of ease of maintenance and hygiene. Helios Series cooling towers can be arranged in multi cells for large capacity requirements.



Single cell capacity 6 - 120 l/s







## green tower

### Low energy consumption

Evaporative cooling equipment can minimize the energy consumption of the process to be cooled. In addition Helios Series open cooling towers have energy efficient axial fans. Both resulting in reducing the energy usage of the cooling system and CO<sub>2</sub> emissions.



### LOW ENVIRONMENTAL IMPACT PRODUCT

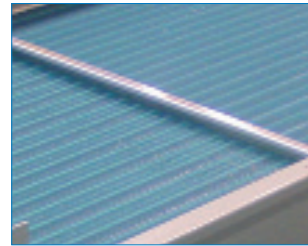
### Low sound operation

Helios Series open cooling towers use fans with low sound emissions as standard. For extremely sound sensitive applications, where typically centrifugal fans are used, Whisper Quiet fans\* with or without sound attenuators\* and water silencers\* are available.

### Plume Control

All Helios Series open cooling towers can be equipped with finned coils\*, which are installed above the drift eliminators with the aim to reduce or eliminate visible plume.

Whisper Quiet fan\*



Plume abatement coil\*



Inward sliding access door.  
Motor with external adjusters and removal davit\*

## hygiene and maintenance

### Choice of construction materials

Helios Series open cooling towers offer a broad choice of construction materials, ranging from galvanized steel (Baltiplus) to the proven Baltibond\* Corrosion Protection System and stainless steel\* (AISI 304L or 316L).

### Access

- Easy side removal of the motor with motor removal davit\*.
- Externally accessible motor adjusters have built-in locking wrench for easy motor alignment and belt tensioning.
- Inward sliding access door in fan section.
- External platforms and ladders\*.
- Combined inlet shields are easily removable without tools.
- Removable side panel\* for easy access and inspection of the fill.

### Hygiene

- The cold water basin is sloped towards the drain.
- The suction strainer anti-vortex hood is removable.
- The combined inlet shields protect the basin water from direct sunlight and the intrusion of foreign matter.
- The water distribution system employs the BranchLok™ system, which allows removal of each branch for ease of cleaning.
- Sump sweeper piping\* minimising sediments in the cold water basin is available for use with side stream filtration.
- A clean out port\* can be installed in the cold water basin.
- Removable fill bundle blocks\*.

## operational flexibility

The Helios Series cooling tower product line contains a large number of models, which can be shipped in a **closed container**.

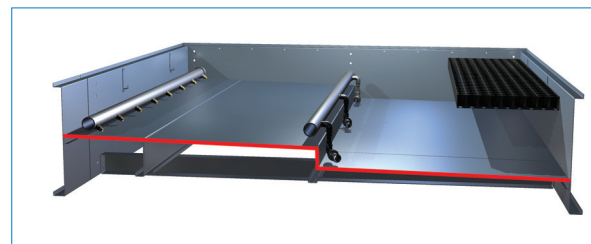
**Vibration cut-out-switches\*** to protect the equipment against mechanical failure.

**Electrical basin heaters\*** to protect the water in the basin against freezing, when the tower is idle.

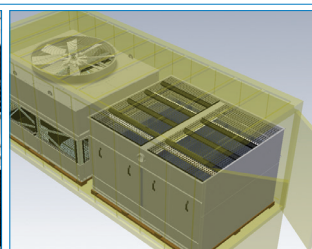
**Electric water level control\*** for precise control of the water level with no need for seasonal adjustment.

**High temperature fill\*** for entering water temperatures above 55 °C (max. temperature 65 °C).

Cold water basin sloping towards drain, with sump sweeper piping\* and water silencers\*



Removable side panels\* and fill bundle blocks\*



Models suitable for container shipment

\* option



# BALTIMORE AIRCOIL COMPANY

## more than 75 years of experience and know-how

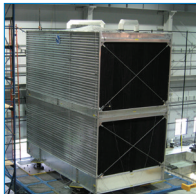
With thousands of successfully operating installations worldwide Baltimore Aircoil has the **application and system experience** to assist you in the design, installation and operation of your cooling equipment. Ongoing investment in research, combined with an advanced **R&D** laboratory facility, enables BAC to consistently offer new technologies and products to meet developing industry demands.

Baltimore Aircoil has a **network of highly qualified sales representatives** backed up by an experienced technical staff to ensure that each customer project is a success.

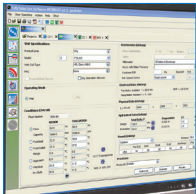
**Sustainability** is fostered and cultivated in BAC's business processes. Through our products we also help our customers to achieve their sustainability goals. You can find BAC's sustainability commitments on the website [www.BacSustainability.com](http://www.BacSustainability.com)



3D-design software



5000 m² R&D-test centre



selection and simulation software



testing



high quality and sustainable manufacturing



on site services



sustainable business processes and culture

There is a wide variety of open cooling tower concepts available on the market. For this reason we recommend you to evaluate different cooling tower configurations for your project. Your BAC Balticare representative is available to assist you in this evaluation.

In order to select the right cooling tower for a specific application a number of important parameters should be considered. Listed below are questions, which should be answered when making your choice.

### about the application

- What are the design conditions (flow, water in and out and entering wet bulb temperature) which achieve the best energy efficiency for my process?
- Are there acoustical limitations (sound power, sound pressure, day, night)?
- What space is available for the cooling tower?
- How can maintenance and cleaning be conducted?
- Could the formation of visible plume represent a problem?
- What is the condition of the make-up water and how to control the recirculating water quality?

### about the supplier

- How has the manufacturer established his ratings?
- What is the level of the manufacturer's service and access to original spare parts?
- Can the manufacturer demonstrate compliance with directives and regulations?
- Who is my contact person for technical and commercial assistance?

For more information visit our website at [www.BaltimoreAircoil.eu](http://www.BaltimoreAircoil.eu) or contact your BAC representative to assist you with the selection, operation and maintenance of your installation, to ensure continuous efficiency of your process.



[www.BaltimoreAircoil.eu](http://www.BaltimoreAircoil.eu)  
[www.BacSustainability.com](http://www.BacSustainability.com)  
[info@BaltimoreAircoil.eu](mailto:info@BaltimoreAircoil.eu)



**BALTIMORE AIRCOIL COMPANY**

Your local contact :