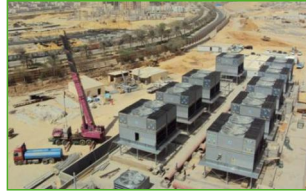




FXV-D

Closed circuit cooling towers



Key benefits

- Star in energy efficiency
- Low maintenance and easy inspection
- Optimal performance guaranteed

FXV-D characteristics

Combined flow, axial fan, induced draft

Capacity range

up to 2290 kW

Maximum entering fluid temperature

82°C

Typical applications

- Medium to large HVAC and industrial applications such as electric arc furnaces and pharmaceutical plants.



Star in energy-efficiency

- [Evaporative cooling](#) PLUS unique combined heat transfer system for minimized system-wide energy consumption.
- **Axial fan** – half the consumption of rivals and huge single cell capacity: saving you more!
- [BACross II fill](#) factory-configured for unrivalled water/air contact and minimal air pressure drop. Guarantees **optimal cooling tower efficiency** with cooling system energy well under control.
- **High efficiency fan motors.**

Low maintenance and easy inspection

- Inspect and maintain towers with **unrivalled comfort and safely: while standing** inside.
- The FXV-D has a **spacious plenum** (internal area) and **easy inspection/maintenance access**
- **Fans** are easily accessible from the in- and outside
- Inspect internal fill and coil easily via **removable drift eliminator modules**.
- The [BACross II fill](#) is telescopically-supported for easy sheet by sheet inspection/cleaning and **no dismantling**.
- Self-cleaning cold water basin and fill above **sloped basin** to flush out dirt and debris.

Optimal performance guaranteed

- Unique and patented heat transfer system: [featuring combined flow](#) via heat exchange coil and fill pack, for fine temperature applications and thermal challenges.
- **Huge industry-best single cell capacity!**
- [BACross II fill](#) - patented sheet and **maximum air/water contact** for optimal heat transfer performance.
- Encased in **corrosion-resistant fibreglass** polyester for long service life.

Ultra silent design

- FXV-D units include **low noise axial fans** for minimal surrounding noise. To reduce noise even further, choose [Whisper Quiet fans](#).
- Factory designed, tested and rated [sound attenuation](#) is available on air inlet to cut operation noise even further.
- [BACross II fill](#) guides smoothly the water all the way into the basin **without water splash noise**.

Cheap to install

- FXV-D cooling towers are factory-built and shipped in sections for larger models to reduce the overall size and weight, allowing **easy on-site section assembly** with smaller crane.

Unmatched hygiene control



- Easy-clean and easy-inspect FXV-D towers **reduce hygiene risks** from bacteria or biofilm inside.
- **Combined inlet shields** block sunlight to prevent biological growth in the tower, filter the air and stop water splashing outside.
- The **drift eliminators** to prevent droplets escaping into the air are tested and certified by Eurovent.

Interested in the FXV-D cooling tower for cooling your process fluid? Contact your [local BAC representative](#).

Downloads

- [FXV-D closed circuit cooling tower](#)
- [Operating and Maintenance FXV-D](#)
- [Rigging and Installation FXV-D](#)