

# Options and accessories

## Closed circuit cooling towers

### Options and accessories

Below is a listing of the main FCI options and accessories. If your required option or accessory is not listed, look no further than your [local BAC representative](#).



#### Platforms, ladders, safety cage and handrail

To inspect and maintain from the top of the unit more **easily and safely**, platforms, a ladder, safety cage and handrails can be installed.



#### Motor removal davit

Thanks to our factory-installed heaters, the water stays at 4°C and **never freezes**, even during equipments downtime and however cold it gets outside.



## Electric water level control package

For perfectly precise water level control, replace the standard mechanical valve with our electrical water level controller.



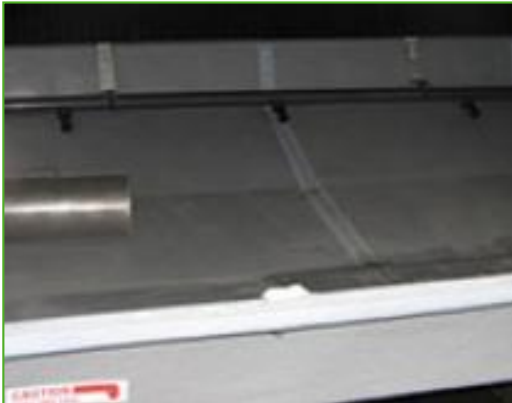
## Nitrogen filling of coil

Charge the cooling coil with nitrogen for **anti-corrosion protection** during long shipment periods (ocean freight) or on-site storage.



## Standby pump

Install a standby **reserve spray pump** as failure backup!



## Sump sweeper piping

Sump sweeper piping **prevents sediment collecting in the cold water basin** of the unit. A complete piping system, including nozzles, is installed in the basin of the condenser **for connection to side stream filtration** equipment.



## Filter

Separators and media filters efficiently **remove suspended solids** in the recirculating water, reducing system cleaning costs and optimizing water treatment results. Filtration helps you keep the recirculating water clean.



## Motor removal davit

For **easy removal or lifting** of fan motor.



## Vibration cut out switch

The switch **detects excessive fan drive vibration** caused by or any mechanical fault.



## Water treatment equipment

Devices to control water treatment are needed to ensure proper **cooling tower water care**. Not only does this help protect the components and fill pack, controlling corrosion, scaling and fouling, it also avoids the proliferation of harmful bacteria, including **legionella**, in the recirculating water.



## Flanges

Flanges facilitate **pipng connections** on-site.