

Options and accessories

Refrigerant condensers

Options and accessories

Below is a listing of the main VCL options and accessories. If your required option or accessory is not listed, look no further than your [local BAC representative](#).



Sound attenuation

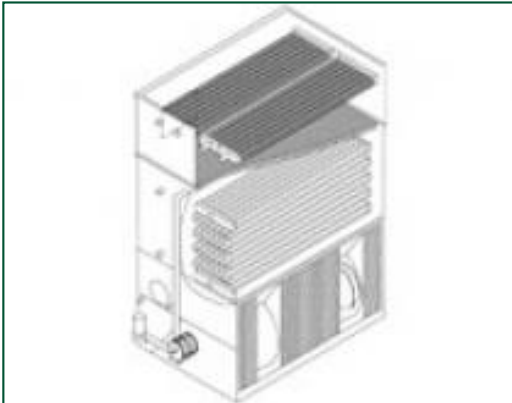
Reducing noise at air intake and discharge points brings us closer to silent cooling equipment.

- The sound reductions obtained by HS sound attenuation are perfect for **residential** sound requirements.
- Heavy noise reductions can be achieved with HD sound attenuation, making it ideal for **rural** requirements.



Pump relocation

Move the pump to the connection side and make it **more accessible** when using sound attenuation at the fan side.



Desuperheater

Boost capacity and reduce plume of ammonia reciprocating compressor systems with a desuperheater.



Baltiguard drive system

With this, operate your system like a dual-speed motor, but with standby reserve capacity **to cope with any failure**.



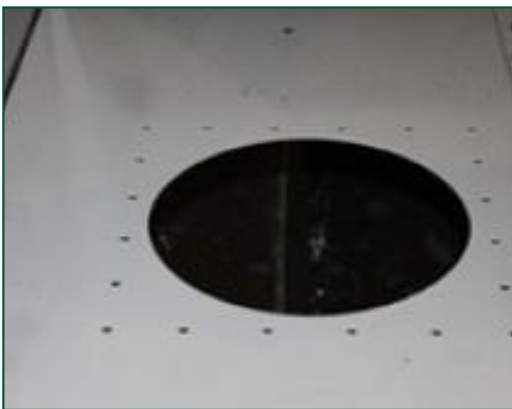
Steel drift eliminators

Steel drift eliminators are more **robust** than plastic alternatives.



Nitrogen filling of coil

Charge the condensing coil with nitrogen for **anti-corrosion protection** during long shipment periods (ocean freight) or on-site storage.



Remote sump connection

The best way to **prevent a sump freezing** is to use the auxiliary remote variety within a heated area. Shutting off the circulating pump allows all the water in the water distribution, as well as that in suspension and the sump to drain freely to the auxiliary sump.



Basin heater package

Thanks to our factory-installed heaters, the water stays at 4°C and **never freezes**, even during equipments downtime and however cold it gets outside.



Electric water level control package

For perfectly precise water level control, replace the standard mechanical valve with our electrical water level controller.



Discharge hood

Discharge hoods **reduce the risk of re-circulation** in tight enclosures by increasing discharge air velocity, and can be used to elevate the unit discharge above adjacent walls to comply with layout guidelines.



Water treatment equipment

Devices to control water treatment are needed to ensure proper **condenser water care**. Not only does this help protect the components and fill pack, controlling corrosion, scaling and fouling, it also avoids the proliferation of harmful bacteria, including **legionella**, in the recirculating water.



Standby pump

Install a standby **reserve spray pump** as failure backup!



Filter

Separators and media filters efficiently **remove suspended solids** in the recirculating water, reducing system cleaning costs and optimizing water treatment results. Filtration helps you keep the recirculating water clean.



Sump sweeper piping

Sump sweeper piping **prevents sediment collecting in the cold water basin** of the unit. A complete piping system, including nozzles, is installed in the basin of the condenser **for connection to side stream filtration** equipment.



Clean out port

Clean out port **makes it easy to eliminate silt and sludge** from the condenser basin when cleaning and flushing the sump.