



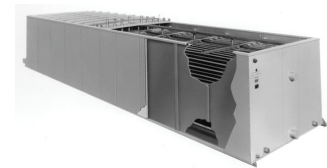
# Construction details

## Ice thermal storage

### Construction details

#### 1. Material options

- [Tank](#) is constructed of heavy-gauge hot-dip **galvanized steel** for unit steel panels and structural elements, all with welded seams. Tank includes high quality **insulation**.
- [Baltiplus 810™ coating](#) .



#### 2. Coil

The coil is constructed of continuous length of **prime surface steel**, hot-dip galvanized after fabrication. Designed for maximum 10 bar (glycol) or 22 bar (ammonia) operating pressure according to PED.

#### 3. Construction

- Factory assembled construction (except air pump).
- **Air distribution system** consists of multiple **perforated PVC pipes** and **air pump**.
- **Ice logic ice thickness controller (option)**: sensor on coil for deactivation of refrigerant compressor at full ice build.

Like to know more about the TSU-C/F construction details? Contact your [local BAC representative](#).