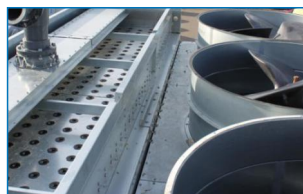
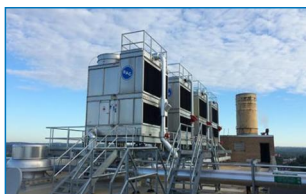




S1500E

Open cooling towers



Key benefits

- Unmatched energy savings with less than 2 years payback.
- Low maintenance and easy inspection, 25% reduction in annual maintenance costs.
- Extreme low sound levels matching centrifugal fan units with attenuation.

S1500E characteristics

Cross flow, Axial fan, induced draft

Capacity range

8 - 215 l/s

Water distribution

Gravity with **variable flow**

Maximum entering water temperature

55°C standard fill
60°C with alternative fill

Typical applications

- Medium HVAC and industrial applications
- Counterflow and crossflow unit replacements
- Tight enclosures
- Installations requiring a single air inlet



Unmatched energy saving

- **Evaporative cooling** for system-wide energy saving at lower operating temperatures.
- **Axial fan** uses **half the energy** of similar centrifugal fan units.
- **Save pump kW!** Less pump head for this gravity water distribution system. In periods of reduced load, **weir dams** close off partly the hot water basin **saving pump energy**.
- [BACross fill](#) – factory-configured for maximum water/air contact and low air pressure drop for optimal cooling tower efficiency with limited energy consumption.
- **High efficiency fan motors**
- **Multiple fan motor system** covers independent fan motor and drive assembly per fan. In case of fan failure, the other fan(s) can still operate.
- **XES1500E** line with smaller motors to reduce electricity consumption for the same cooling capacity.

Low maintenance and easy inspection

- Unrivalled safe and **comfortable access**. Inspect and maintain the tower **while standing** and without crawling.
- The S1500E has a **spacious plenum** (internal area) and **easy inspection/maintenance access**.
- Access via **large hinged** door. With optional [internal walkway](#): no basin draining needed for unit interior or fill pack inspection.
- Inspection of **water distribution system** (hot water basin and nozzles) possible outside the unit, during **operation**.
- [Distribution basin covers](#) prevent debris collecting in the unit.
- You can inspect and clean easily the core of the [BACross fill](#) **sheet by sheet without dismantling**. BACross design reduces fouling. Optional [telescopic fill supports](#) for easy replacement of the sheets.
- The fill includes integrated **drift eliminators**.
- Self-cleaning cold water basin and fill above **sloped basin** to flush out dirt and debris.
- **Fans** are easily accessible from the in- and outside
- Optional [clean out port](#) **helps remove** silt and sludge from the cooling tower basin.
- Removable **suction strainer** anti-vortex hood.
- Optional [sump sweeper piping](#) prevents sediment collecting in the cold water basin.
- Various corrosion-resistant materials, including the [Baltiplus 810™ coating](#) for guaranteed long service life.
- Optional [motor removal davit](#) for easy motor replacement.

Extreme low sound levels

- A choice of various fan types such as low noise axial fans and [Whisper Quiet fans](#) for minimal surrounding noise.
- [BACross fill](#) smoothly guides the water all the way into the basin **without water splash noise**.
- Single-side air inlet, and a **quieter tower rear** for more noise-sensitive areas.
- Try our **XES1500E** line with smaller motors for **extremely low noise** levels.
- Factory designed, tested and rated [sound attenuation](#) is available on air inlet to cut operation noise



even further.

Superb hygiene control

- Proper hygiene inspection **without unit shut-down**.
- Easy-clean and easy-inspect S1500E towers **reduce hygiene risks** from bacteria (eg Legionella) or biofilm inside.
- Self-cleaning cold water basin and fill above **sloped basin** to flush out dirt and debris.
- [BACross fill](#) for reduced fouling and easy sheet by sheet cleaning without dismantling.
- The fill includes integrated **drift eliminators**.
- **Combined inlet shields** block sunlight to prevent biological growth in the tower, filter the air and stop water splashing outside.
- Optional [distribution basin](#) covers prevent debris collecting in the unit.
- Optional [clean out port](#) **helps remove** silt and sludge from the cooling tower basin.
- Optional [sump sweeper piping](#) **prevents sediment collecting in the cold water basin**.

Ideal replacement unit

- **Single side air inlet and discharge**, fits in most enclosures.
- S1500E are **ideal replacement units**. Small fan motors and low spray pressure allow **re-use of existing electrical cabinet**.
- S1500E cooling towers are factory-built and shipped in 1 or 2 sections to reduce the overall size and weight, allowing **easy on-site section assembly** with smaller crane.

Year round reliable operation

- Optimal unit condition thanks to **inspection during operation**.
- The thermal performance of S1500E cooling towers is tested and [CTI-certified](#).
- Proven **freeze free** winter operation.
- **Multiple fan motor system** covers independent fan motor and drive assembly per fan. In case of fan failure, the other fan(s) can still operate.
- Various **corrosion-resistant** materials, including the [BaltiPlus 810™ coating](#) for guaranteed long service life.
- The **thermal performance** of S1500E cooling towers is [CTI-certified](#).

Interested in the S1500E cooling tower for cooling your process water? Contact your local [BAC representative](#).

Downloads

- [S1500E open cooling tower](#)



- [Operating and maintenance S1500E](#)
- [Rigging and installation S1500E](#)